

# Human Claudin 6 Protein-VLP

Cat. No. CLD-HM006



## Description

<b>Source</b>	Recombinant Full length Human Claudin 6 Protein-VLP is expressed from HEK293. It contains Met1-Val220.
<b>Accession</b>	P56747
<b>Molecular Weight</b>	The target protein has a predicted MW of 24.5 kDa.
<b>Endotoxin</b>	Less than 1EU per µg by the LAL method.
<b>Purity</b>	> 95% as determined by HPLC.

## Formulation and Storage

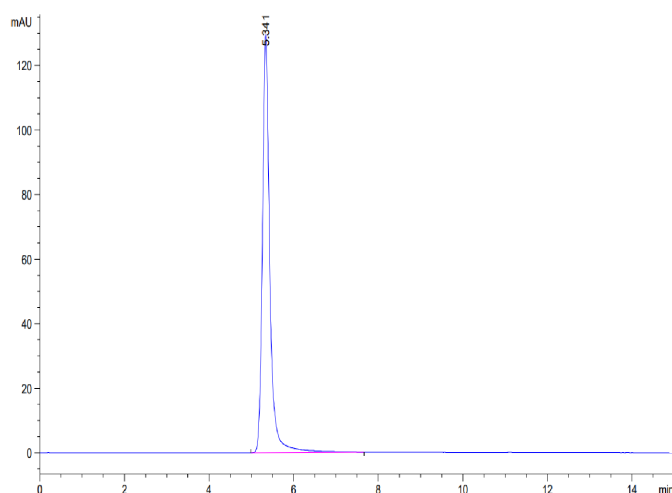
<b>Formulation</b>	Supplied as 0.22µm filtered solution in PBS, 300mM L-Arginine (pH 7.4). Notice: If you need it for immunization, water-soluble adjuvant is recommended.
<b>Storage</b>	Valid for 12 months from date of receipt when stored at -80°C. Recommend to aliquot the protein into smaller quantities for optimal storage. Please minimize freeze-thaw cycles.

## Background

Claudin-6 is a multipass transmembrane protein in the Claudin family. Claudin-6 is expressed by epithelial cells where it participates in tissue development and the maintenance of tight junction integrity. Human Claudin-6 shares 88% and 86% amino acid sequence identity with mouse and rat Claudin-6, respectively.

## Assay Data

### SEC-HPLC

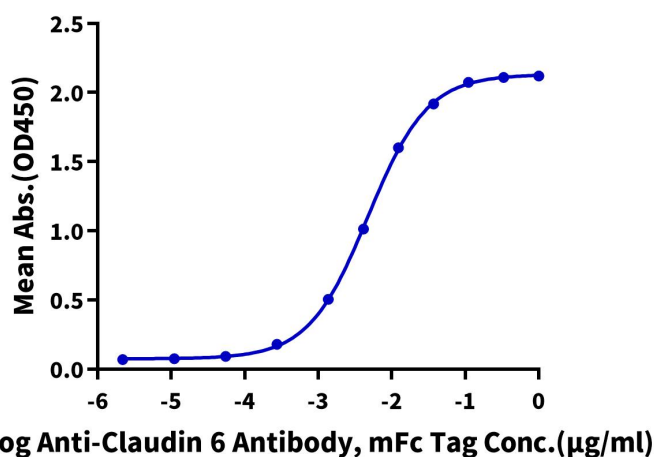


The purity of Human Claudin 6 VLP is greater than 95% as determined by SEC-HPLC.

### ELISA Data

#### Human Claudin 6 VLP ELISA

0.1µg Human Claudin 6 VLP Per Well



Immobilized Human Claudin 6 VLP at 1µg/ml (100µl/Well). Dose response curve for Anti-Claudin 6 Antibody, mFc Tag with the EC50 of 4.8ng/ml determined by ELISA (QC Test).